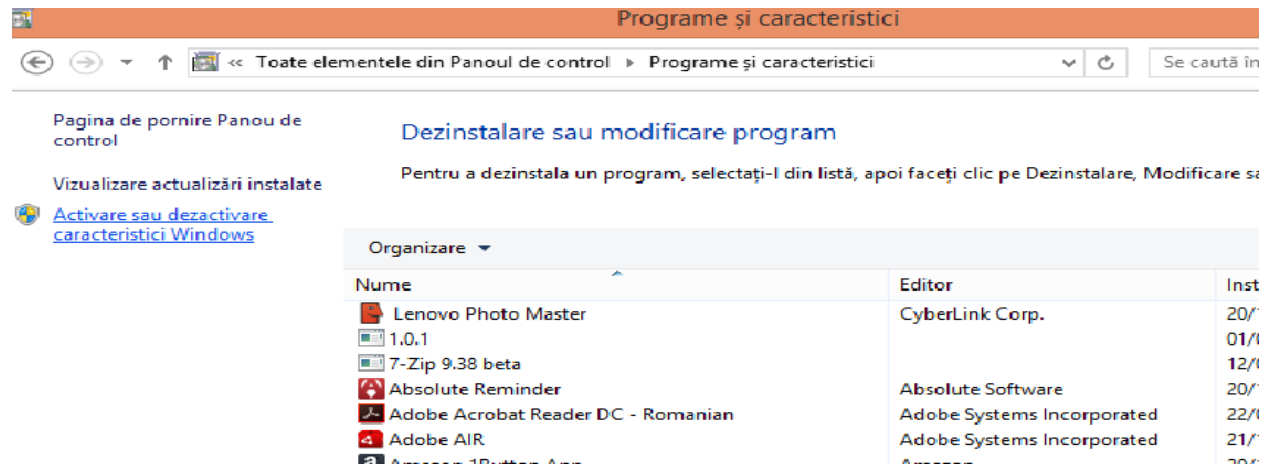
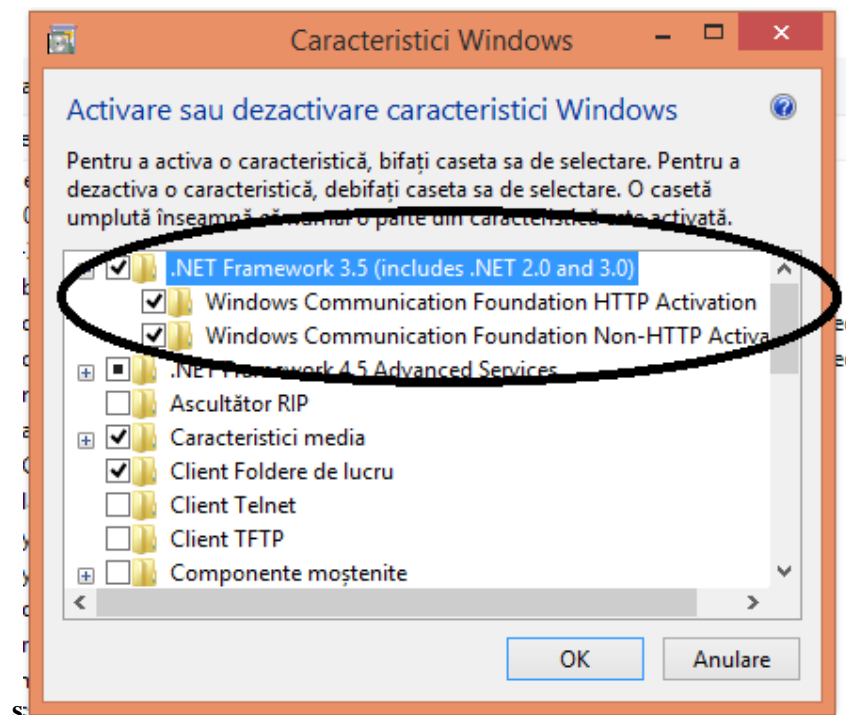


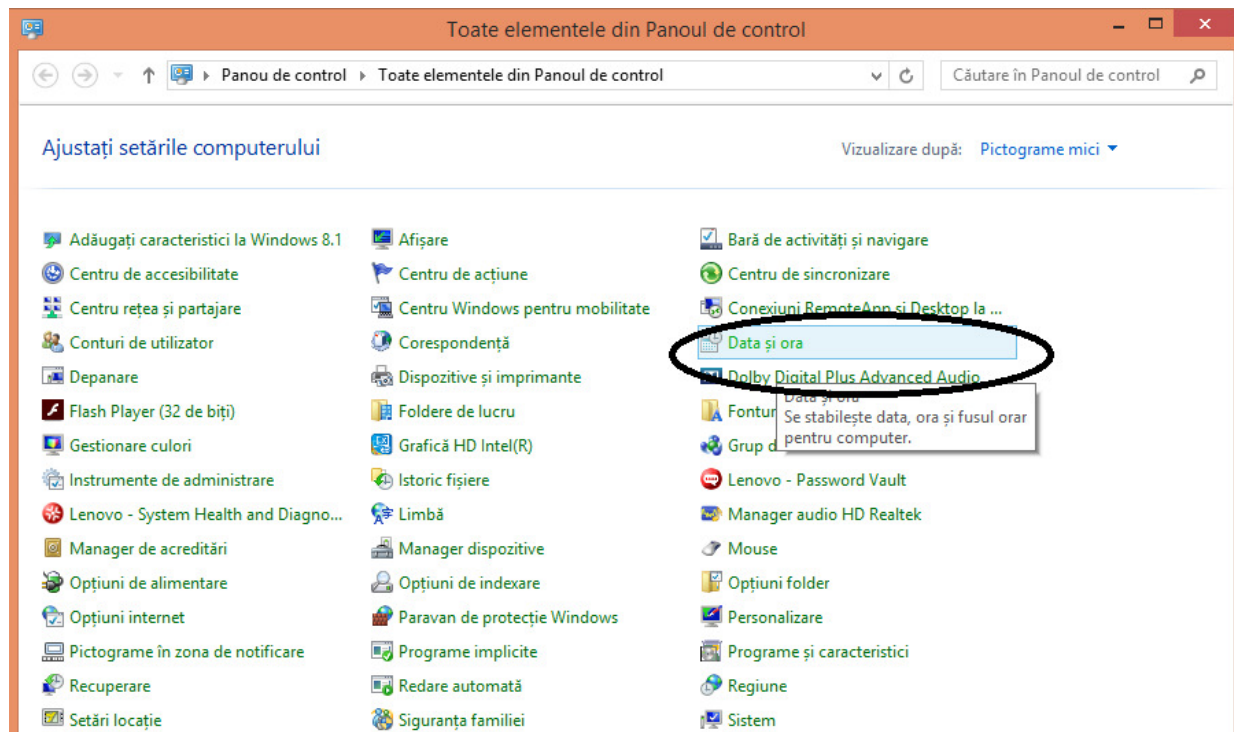
## Mergeti la Activare dezactivare caracteristici Windows

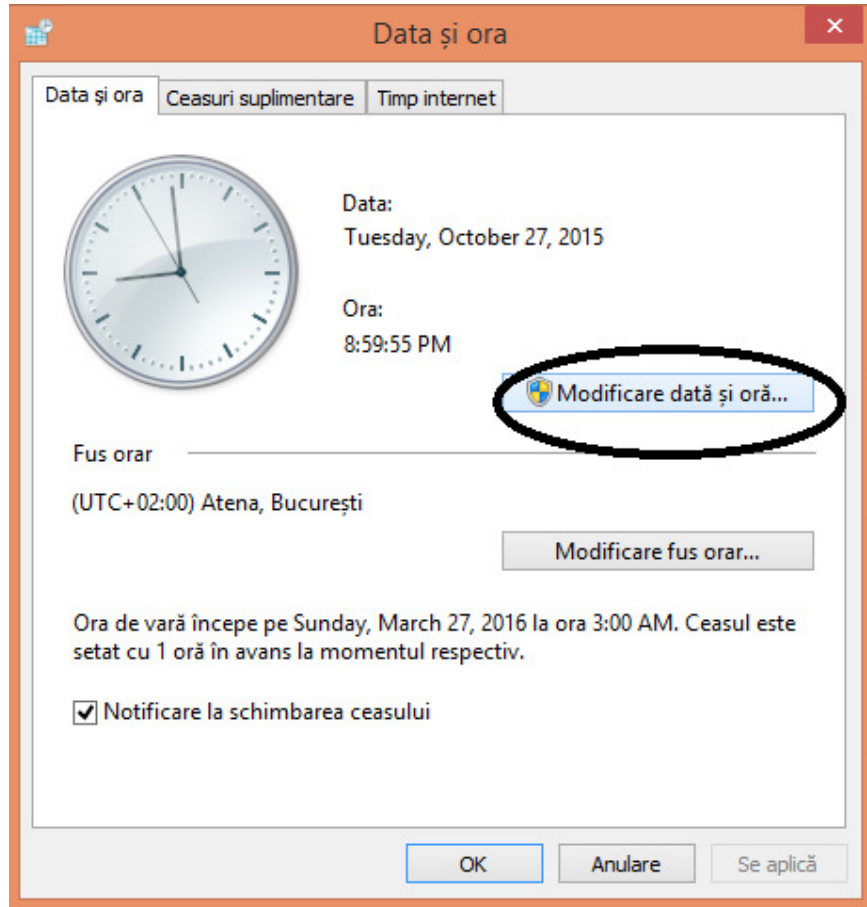


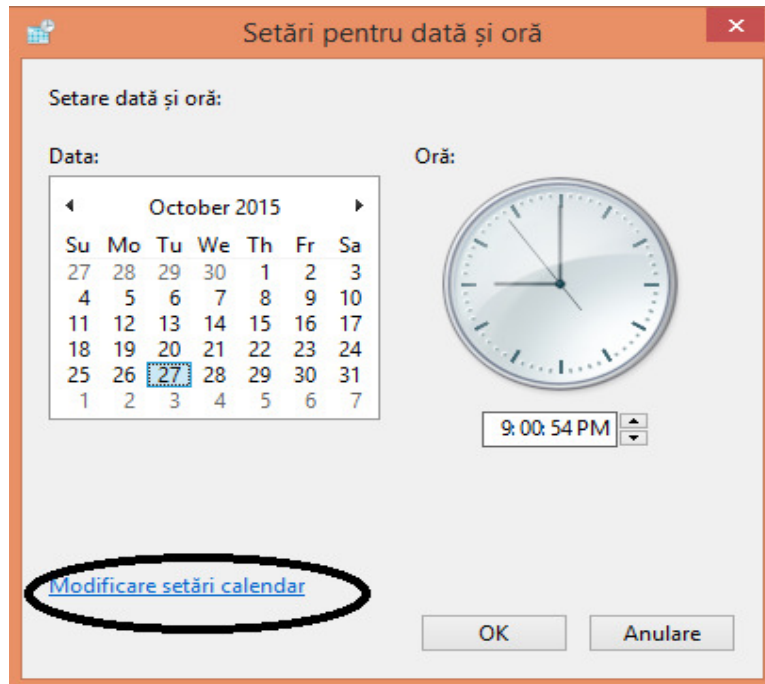
Bifati toate checkbox-urile ca in imaginea de mai jos dupa care apasati butonul OK



SETARE FORMAT DATA **dd/mm/yyyy (zz/LL/aaaa)** – fara aceasta configurare programul nu functioneaza corect







La data scurta se introduce zz/LL/aaaa (data este format romanesc)

Se apasa butonul **Se aplica** apoi **OK**

